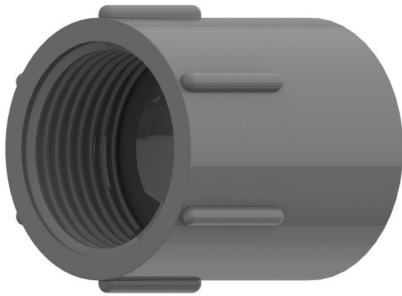
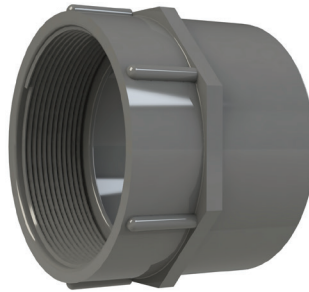


# Female Adapters

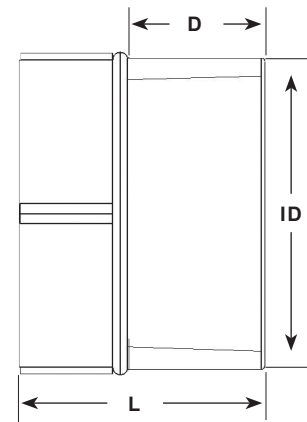
- Listed to UL 651
- Conforms to NEMA TC 3
- Structured with NPT-Tapered Threads



1/2 through 2-1/2 and 8 inch sizes



3 through 6 inch sizes



Trade Size	Part Number	Average Dimensions (in)				Package Quantity
		Length L	Socket Depth D	Socket ID	Threads/Inch	
1/2	FA05	1.41	0.68	0.85	14	200
3/4	FA07	1.50	0.75	1.06	14	125
1	FA10	1.75	0.91	1.33	11.5	70
1 1/4	FA12	1.97	1.00	1.68	11.5	40
1 1/2	FA15	2.15	1.09	1.92	11.5	30
2	FA20	2.16	1.19	2.39	11.5	40
2 1/2	FA25	2.99	1.56	2.89	8	20
3	FA30	3.12	1.75	3.52	8	40
3 1/2	FA35	3.04	1.78	4.02	8	30
4	FA40	3.10	1.78	4.52	8	20
5	FA50	3.83	2.25	5.59	8	10
6	FA60	4.43	2.50	6.69	8	8
8*	FA80	6.96	4.42	8.65	8	2

\*8 inch products are not included in UL 651 or NEMA TC 3